

# L.J. Wicks

Telephone  
Norwood 1608

General Fruit Tree Nurserymen  
FRESHFORD NURSERIES  
HIGHBURY, S.A.

## PRICE LIST

1923.





**I**T is with pleasure and confidence that I place in your hands my 1923 Price List of Fruit Trees and Vines, and take this opportunity to thank my customers for the splendid reception accorded the trees from the Freshford Nurseries.

Established in 1917 the Nurseries have in six years made remarkable progress, and to-day contain a comprehensive stock of Fruit Trees and Vines which for health, vigor, and fibrous root system, will not suffer by comparison with any that can be produced.

All the illustrations published in this catalogue are actual photographs of various parts of the Nursery taken during April, 1923, and to those who are unable to pay me a visit and personally examine the stock, they will give a general idea of the extent of the Nurseries, the quality of the trees produced, and the extraordinarily favorable position of the land for Nursery work.

Situated in a frostless belt of country on the foothills of the Mount Lofty Range, and at the head of the fertile Torrens Valley, in a climate that is cooler than the Adelaide plains, and yet much warmer than the Hills districts. I have already demonstrated that many of the more difficult Nursery lines to propagate, can be raised to perfection.

Oranges, Lemons, Loquats, Mulberries, budded Persimmons and Walnuts, Calimyrna and Capri Figs, are all being extensively grown, while the general deciduous lines, such as Apples, Apricots, Almonds, Peaches, Plums, Cherries, etc., make a strong, robust growth that is a source of considerable satisfaction to me, and cannot fail to delight the purchaser.

The importance of the Fruit Industry to South Australia is only beginning to be realised. We have in the Murray Valley country that is similar, and, in many respects, superior to California, and in supplying trees for the building up of this great new industry, I fully realise my responsibility as a Nurseryman, and will use my utmost endeavor to merit the absolute confidence of the scores of young men who are staking not only their capital, but their lives, in our New Country.

By careful bud selection I am sending out trees not only true to name, but, in the commercial varieties, trees of the best type of that particular variety; and in this connection I wish to bear testimony to the work done by the Department of Agriculture at its Blackwood Experimental Orchard in checking and proving different types of the same varieties, and whose officers are always anxious to help in any direction in the interests of the Fruit Trade.

L. J. WICKS, FRUIT TREE NURSERYMAN  
FRESHFORD NURSERIES, HIGHBURY, S.A.



It will be noticed from my Lists that I have discarded many old and out-of-date varieties, but I am fully alive to the fact that some varieties have been omitted (especially in the Apple List) that are very valuable in certain districts especially adapted to them, and in this respect I am prepared to work any trees to order from buds or wood supplied by any of my Clients, such trees to be the exclusive property of the grower for whom they are worked.

### INVITATION

To intending planters and all interested I extend a cordial invitation to visit the Nurseries during business hours.

The establishment is, of course, closed on Saturday afternoons, Holidays and Sundays, but a visit may be arranged on Saturday afternoon by appointment.

The property is three and a half miles from the Paradise Tram Terminus, where visitors will be met by appointment.

To those coming by road, take lower North-East Road for half a mile past the Highbury Hotel, when the branch road to the right leads into the Nursery. The Nurseries may also be reached on foot from the Athelstone side of the River Torrens, distant two and a half miles from the Paradise Terminus.

### ORDERS

Orders and enquiries will receive prompt and careful attention at all times, and we are always pleased to mail our Price List to any address upon request.

All orders are filled strictly in rotation, so that early orders have the advantage of being reserved from the pick of the beds.

All country orders are packed by the most up-to-date methods and forwarded without loss of time, and with Oranges especially we have had the most satisfactory reports of their condition on arrival.

Unknown correspondents are kindly requested to include a remittance or a satisfactory Adelaide reference with order.

The prices quoted are for Net Cash within one month of receipt of invoice.

### PACKING

Country orders are carefully and thoroughly packed by the most up-to-date methods, and nothing is left undone that will help to ensure the arrival of trees at their destination in a fresh, undamaged condition. For this service I charge just sufficient to defray cost of packing material and cases (where Citrus are sent), and in all other respects deliver free on rail at Mile End, or to any carrier in the City or the East End Market.

NOTE ALTERED PHONE TO  
F 8408

# INDEX

Almonds . . . . .	12	Loquats . . . . .	19
Apples . . . . .	14	Mastergrip Handles . . . . .	34
Apricots . . . . .	15	Mandarins . . . . .	5
Cherries . . . . .	17	Medlars . . . . .	32
Citrus Fruits . . . . .	4	Miscellaneous . . . . .	32
Citrons . . . . .	5	Mulberries . . . . .	20
Cumquats . . . . .	5	Nectarines . . . . .	20
Chestnuts . . . . .	32	Olives . . . . .	21
Climbing Roses . . . . .	36	Oranges . . . . .	4
Crab Apples . . . . .	32	Passion Fruit . . . . .	32
Damsons . . . . .	29	Pecans (Hickory) . . . . .	32
Feijoas . . . . .	32	Peaches . . . . .	22
Figs . . . . .	18	Pears . . . . .	26
Filberts . . . . .	32	Persimmons . . . . .	27
Flowering Cherries . . . . .	33	Plums (European) . . . . .	28
Flowering Peaches . . . . .	33	Plums (Japanese) . . . . .	29
Flowering Plums . . . . .	33	Pomegranates . . . . .	32
General Remarks . . . . .	2	Pomelos . . . . .	5
Gooseberries . . . . .	32	Prunes . . . . .	28
Grape Fruit (Pomelo) . . . . .	5	Quinces . . . . .	30
Grape Vines . . . . .	30	Raspberries . . . . .	32
Guavas . . . . .	32	Strawberries . . . . .	32
Lemons . . . . .	5	Roses (Climbers and Bush) . . . . .	36
Limes . . . . .	5	Roses (Standards) . . . . .	35
Loganberries . . . . .	32	Walnuts . . . . .	6
		Youngberry . . . . .	32



Birdseye view of new Nursery slope, on virgin soil, with young Orchard in foreground.

Photo. March, 1939

# Citrus Fruits

## ORANGES.

4/- each, 45/- doz., £16, £17 per 100

BEACHES No. 3	POORMAN
BLOOD (Malta)	PARRAMATTA
BLOOD RUBY	PAPER RIND ST. MICHAEL
COMPUDA	SILLETTA
EARLY WHITE SILLETTA	THOMPSON'S
GOLDEN BUCKEY	GOLDEN NUGGET
JAFFA	RIO
JOPPA	ST. MICHAEL
MEDITERRANEAN SWEET	PEERLESS
NONPARIEL	VALENCIA LATE
NAVELENCIA	WASHINGTON NAVEL

## MANDARINS.

BEAUTY OF GLEN RETREAT	PARKER'S SPECIAL
CANTON	SCARLET EMPEROR
EMPEROR	SATSUMA
DANCY'S	SHIPPER
NOBILIS	THORNY

## POMELO (Grape Fruit).

MARSH'S SEEDLESS	TRIUMPH
------------------	---------

## PRESERVING.

OVAL KUMQUAT	GIANT CITRON
POORMAN	BENGAL CITRON
FLAT SEVILLE	

## LEMONS.

CHATSWORTH	VILLA FRANCA
EUREKA	LISBON

L. J. WICKS, FRUIT TREE NURSEYMAN  
FRESHFORD NURSERIES, HICHBURY, S.A.



## ALMONDS.

Worked on Almond Stocks.

2/- each, 18/- per doz. (not less than six of one variety); 21/- per doz. assorted; £6 per 100

BRANDIS JORDAN.	IXL
CAL PAPER SHELL	NE PLUS ULTRA
CHELLESTON	PEERLESS
COMMERCIAL	TRUE JORDAN
GOLDEN STATE	WHITE NONPARIEL

## APPLES.

All worked on Northern Spy Blight-proof Stocks.

2/- each, 18/- per doz. (not less than six of one variety); 21/- per doz. assorted; £6 per 100

Our list, though not large, will be found to contain most varieties of proved value in our State. We shall be pleased to procure varieties not listed if required.

BEAUTY OF BATH	BUNCOMBE
BLACK BEN DAVIS	CLEOPATRA
COX'S ORANGE PIPPIN	NICKAJACK
DELICIOUS	PRINCE ALFRED
DUNN'S	REINETTE DU CANADA
EMPEROR ALEX	ROKEWOOD
ENGLAND'S GLORY	ROME BEAUTY
GRAVENSTEN	SCARLET NONPARIEL
GLENGYLE	SUMMER SCARLET PEARMAIN
GRANNY SMITH	STATESMAN
JONATHAN	STRAWBERRY PIPPIN
KING DAVID	STONE PIPPIN
LATE ASTRACAN	TASMA
LONDON PIPPIN	TWENTY OUNCE (Maiden's Blush)
LOY	WILLIAM'S FAVORITE
MARJORIE HAY	WINTER PEARMAIN
MR. GLADSTONE	

L. J. WICKS, FRUIT TREE NURSERYMAN  
FRESHFORD NURSERIES, HIGHBURY, S.A.

## APRICOTS.

2/- each, 18/- per doz., (not less than six of one variety). 21/- per doz. assorted, £6 per 100

All worked on Apricot Seedlings.

BLENHEIM (Shipley's)	OULLIN'S EARLY
CARRINGTON	RIVERSIDE
EARLY MOORPARK	RIVERSIDE LATE
HEMSKIRK	ROBINS
KAISHA	ROYAL
MOORPARK	TREVATT
MANSFIELD	TILTON
NEWCASTLE EARLY	ST. AMBROSE

## CHERRIES.

2/- each, 18/- per doz. (not less than six of one variety); 21/- per doz. assorted; £7 per 100

BEDFORD'S PROLIFIC	EARLY LYONS
BIGGAREAN NAPOLEON	EARLY PURPLE GUIGNE
BIGGAREAN TWYFORD	EARLY RIVERS
BLACK HEART	FLORENCE
BLACK TARTARIAN	KNIGHT'S EARLY BLACK
BURGDORF'S SEEDLINGS	ST. MARGARET
CHAPMAN	WERDER'S EARLY BLACK
DRIVER'S UP-TO-DATE	

## FIGS.

2/- each, 18/- per doz. £6 per 100

BLACK ISCHIA	CALIMYRNA
CASTLE KENNEDY	CAPRI'S No. 1
GROSSE VERTE	CAPRI'S No. 2
MADLINE	CAPRI'S No. 3
TURKEY	CAPRI (Large Fruited)
WHITE ADRIATIC	CAPRI ROBSON'S SEEDLING
WHITE GENOA (Sugar Fig)	

L. J. WICKS, FRUIT TREE NURSERYMAN  
FRESHFORD NURSERIES, HIGHBURY, S.A.



## NECTARINES.

2/- each, 18/- per doz., 21/- per doz. assorted,  
£6 per 100

ALBERT VICTOR

COOZA

EARLY RIVERS

GOLDMINE

IRREWARRA

LEE'S SEEDLING

LEPPIATT'S PROLIFIC

LORD NAPIER

MRS. DR. CHISHOLM

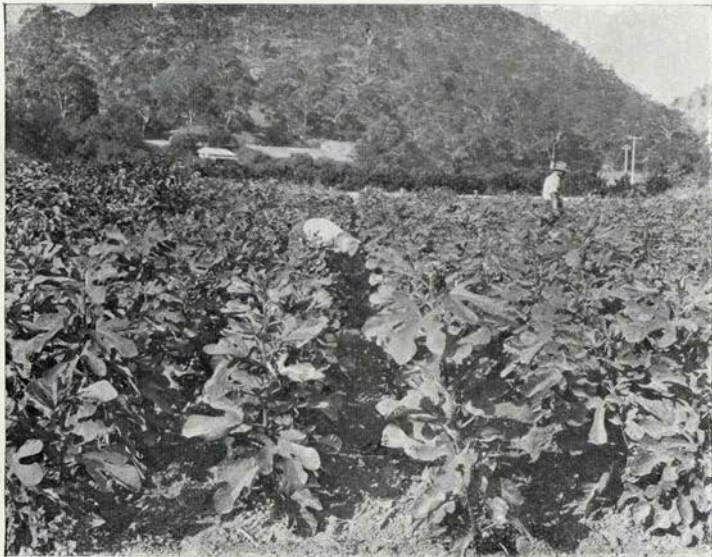
NEW BOY

PROPALMERSTON

STANWICK

W. C. FRIPP

ZEALANDIA



FIVE THOUSAND CALIMYRNA OR SMYRNA LOP FIGS.

### AUSTRALIA'S NEW FRUIT INDUSTRY.

Smyrna figs are now being extensively planted along the Murray, and the insistent demand for the dried product put up for a number of years by Mr. Savage, of the Berri Experimental Orchard, goes far to prove that Australia's climate can produce a dried fig equal or superior to the best that can be imported from its age-long home in Smyrna and the Mediterranean. *Photo. April, 1923.*

L. J. WICKS, FRUIT TREE NURSERYMAN  
FRESHFORD NURSERIES, HICHBURY, S.A.

*Freshford Nurseries, Highbury, S.A.*

L. J. W

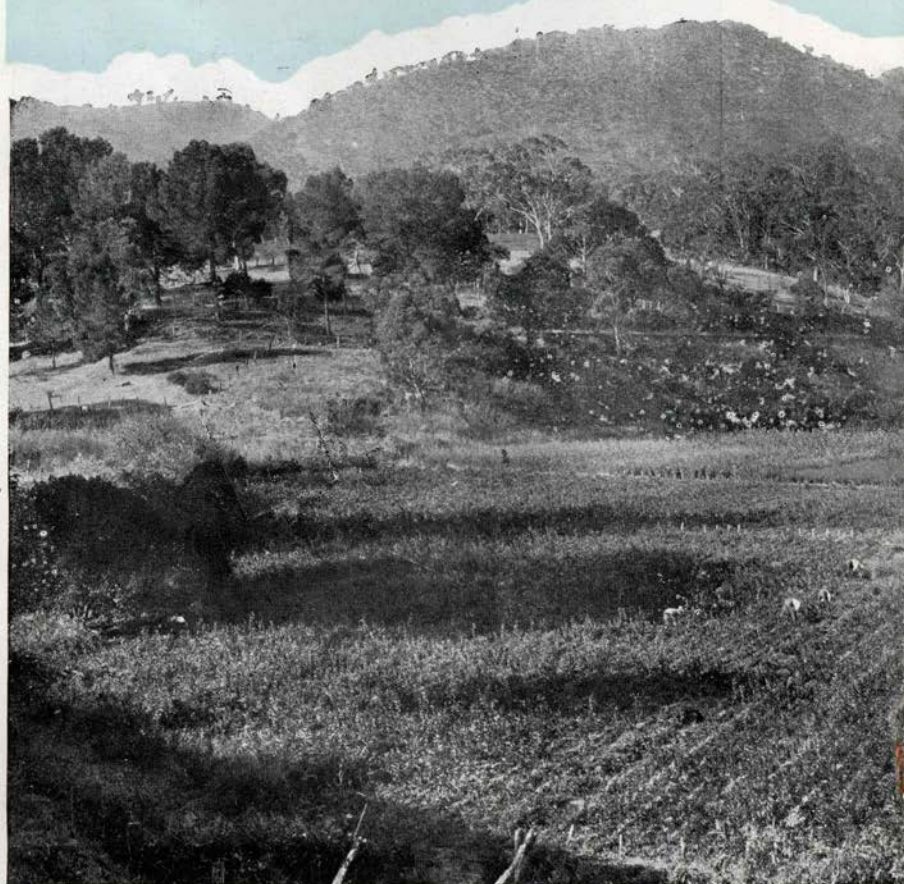
*The whole thing centres on*

*So does your success a*

View of a sheltered flat in which 50,000 orange trees (mostly on seedling orange and Seville stocks) are seen, together with beds containing thousands of figs, mulberries, persimmons, and walnuts revelling in the ideal conditions which surround them.

*Photo. April, 1923.*

QUICK SHIPMENTS WHEN YOU WANT  
UNUSUALLY FINE STOCKS THAT  
ALL GOODS CAREFULLY GRAD  
LITTLE ORDERS FILLED THE S  
INSTRUCTIONS CAREFUL  
TREES OF FIRST QU  
YOUR ASSURANCE  
THE VERY BES





ICKS

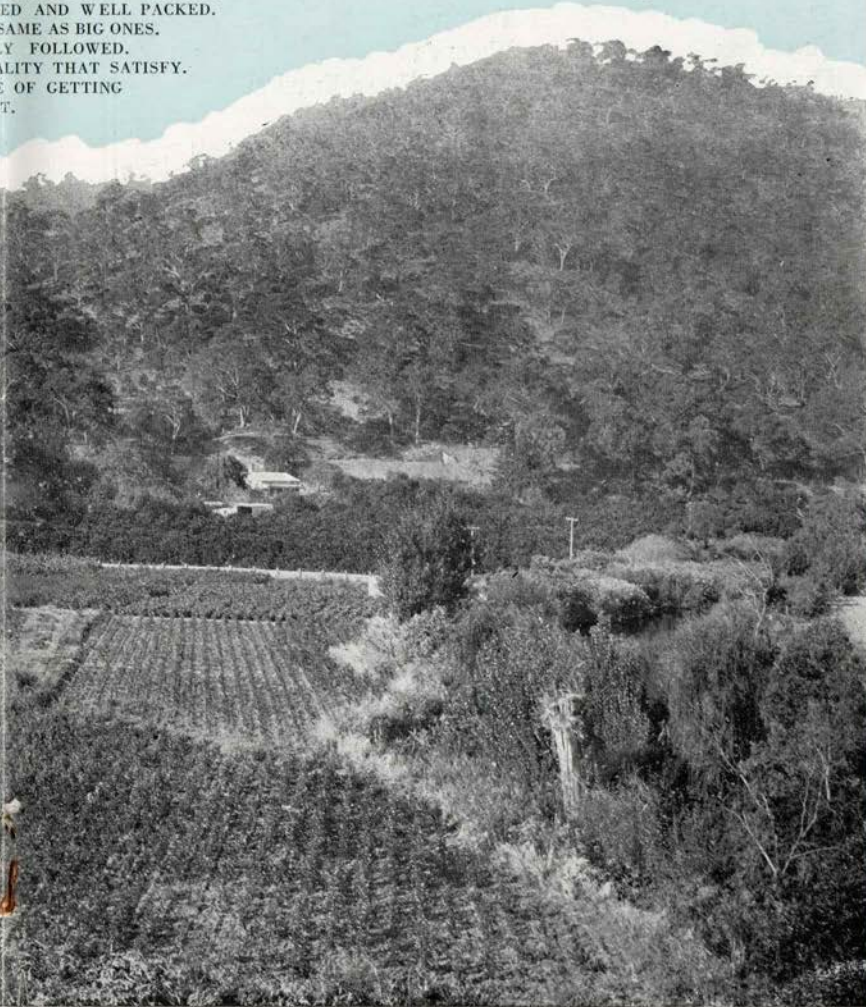
General Fruit Tree Nurseryman.

## QUALITY and SERVICE

and my success

THEM, AS YOU WANT THEM.  
ARE SURE TO PLEASE.  
ED AND WELL PACKED.  
SAME AS BIG ONES.  
Y FOLLOWED.  
ALITY THAT SATISFY.  
E OF GETTING  
T.

*Enquiries respectfully solicited.  
Visitors met at Paradise Terminus  
by Appointment.*





## PEACHES.

2/- each, 18/- per doz., 21/- per doz. assorted,  
£6 per 100

AUSTRALITE	ROYAL GEORGE FREE
BELLE OF GEORGIA	RUBY RED
BRIGG'S RED MAY	SALWAY IMPROVED
CARMAN	SEA EAGLE
CAMDEN SUPURB	SNEED
EARLY CRAWFORD	STARK'S EARLY ELBERTA
ELBERTA	SURECROP
ELBERTA CLING	TRIUMPH
FINLAYSON	WIGGIN'S
FOSTER	WILLOW LEAF ELBERTA
GEORGE IV.	YARRALIN
J. H. HALE	MICHELIN
HALE'S EARLY	MUIR
HIGH'S CANADA	NICHOLL'S ORANGE CLING
LADY PALMERSTON	PEREGRINE
LOUIS GROGNET	RAY
LOVELL	RED BIRD CLING
MAYFLOWER	RED SHANGHAI
MOUNTAIN ROSE	

## CLINGSTONE CANNING PEACHES.

EUREKA	RIVERSIDE (late Red Italian Cling)
GOLDEN QUEEN	SELMA
GOODMAN'S CHOICE	SIMS
LEVIS	TUSCAN
PHILLIPS	PULLARS

## DOUBLE FLOWERING PEACHES, 2/6 each

DOUBLE CRIMSON	DOUBLE SPLENDENS
DOUBLE PINK	DOUBLE WHITE
DOUBLE ROSE	

L. J. WICKS, FRUIT TREE NURSERYMAN  
FRESHFORD NURSERIES, HIGHBURY, S.A.

## PEARS.

2/- each, 18/- per doz., £6 per 100

All worked on Pear Stock.

BEURRE CLANCEAU	KIEFFER'S HYBRID
BEURRE BOSE	LAFFER'S SEEDLING
BEURRE DIEL	L'INCONNUE
BROCKWORTH PARK	LE LECTIER
BROOM PARK	MARIE LOUISE
CITRON DES CARMES	MADAM COLE
CLAPP'S FAVORITE	PACKHAM'S TRIUMPH
DOYENNE DU COMICE	PASSANS DU PORTUGAL (Lemon Bergamot)
DURONDEAU	SOUVENIER DU CONGRESS
EASTER BEURRE	UVEDALES ST. GERMAIN
GLOU MORCEAU	VICAR OF WINKFIELD
HARRINGTON'S VICTORIA	WILLIAM BON CHRETIEN
HOWELL	WINTER NELIS
JARGONELLE	
JOSEPHINE D'MALINES	

## PEARS ON QUINCE STOCK.

GLOU MORCEAU

## LOQUATS.

3/- each, 27/6 per doz., £8 10/- per 100

CHATSWORTH VICTORY	ENORMITY
EARLY OVAL	HERD'S MAMMOTH

## MULBERRIES.

2/6 each.

BLACK ENGLISH	DOWNING'S EVERBEARING
---------------	-----------------------

L. J. WICKS, FRUIT TREE NURSERYMAN  
FRESHFORD NURSERIES, HIGHBURY, S.A.

## PLUMS AND PRUNES.

2/- each, 18/- per doz. (not less than six of one variety); 21/- per doz. assorted; £6 per 100

ANGELINA BURDETT  
CHERRY PLUM  
CLYMAN  
COE'S GOLDEN DROP  
DIAMOND  
EARLY NEW ORLEANS  
EGG PLUM  
(Magnum Bonum)  
FELLEMBERG  
GIANT  
GRAND DUKE  
GREEN GAGE  
JEFFERSON  
KIRK

LATE BLACK ORLEANS  
MONARCH  
OCTOBER GREEN GAGE  
PONDS  
PRESIDENT  
PRUNE D'AGEN  
REINE CLAUDE DU BAVAY  
RIVER'S EARLY PROLIFIC  
ROBE D'SARGEANT  
SPLENDOUR  
SUGAR  
TRAGEDY  
WASHINGTON

## DAMSONS.

2/- each, 18/- per doz. (not less than six of one variety); 21/- per doz. assorted; £6 per 100

COLE'S PROLIFIC  
ENGLISH  
FARLEIGH

HEREFORD  
SHROPSHIRE  
BLUE SUPERB

## JAPANESE PLUMS.

2/- each, 18/- per doz. (not less than six of one variety); 21/- per doz. assorted; £6 per 100

APPLE  
BURBANK  
CLIMAX  
FORMOSA  
FIRST  
GAVIOTA  
HERMOSILLO  
KELSEY  
OCTOBER PURPLE

OMAHA  
RUBIO  
WICKSON  
WRIGHT'S EARLY  
VESUVIUS, 2/6 each.  
SANTA ROSA  
SATSUMA  
SHIPPER

L. J. WICKS, FRUIT TREE NURSERYMAN  
FRESHFORD NURSERIES, HIGHBURY, S.A.



## QUINCES.

2/- each, 18/- per doz. (not less than six of one variety); 21/- per doz. assorted; £6 per 100

MASTERS EARLY

RAE'S MAMMOTH

MISSOURI MAMMOTH

SMYRNA

PINEAPPLE

VAN DEMAN

## PERSIMMONS. 2/6 each.

AMONG

ONSHU

DAI DAI MARU

SEEDLESS

HYAKUMO

SUGAR LOAF

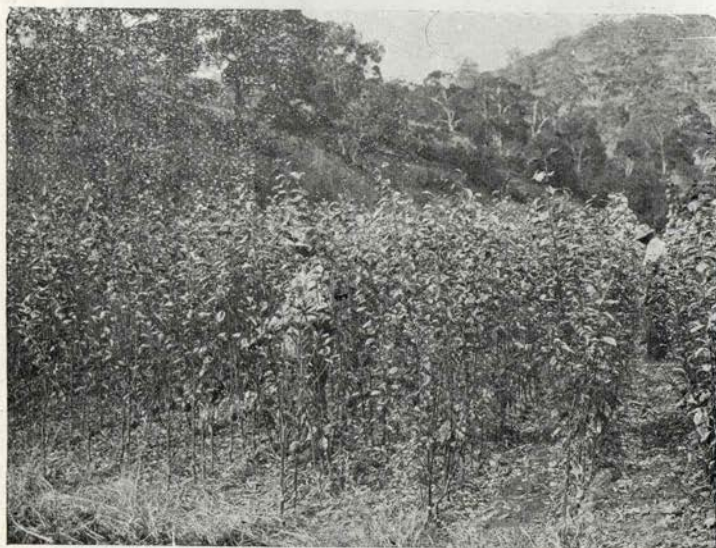
JUBILEE

TSURO MAGARI

KUROKUMO

WILLIAM'S SEEDLESS

NINA

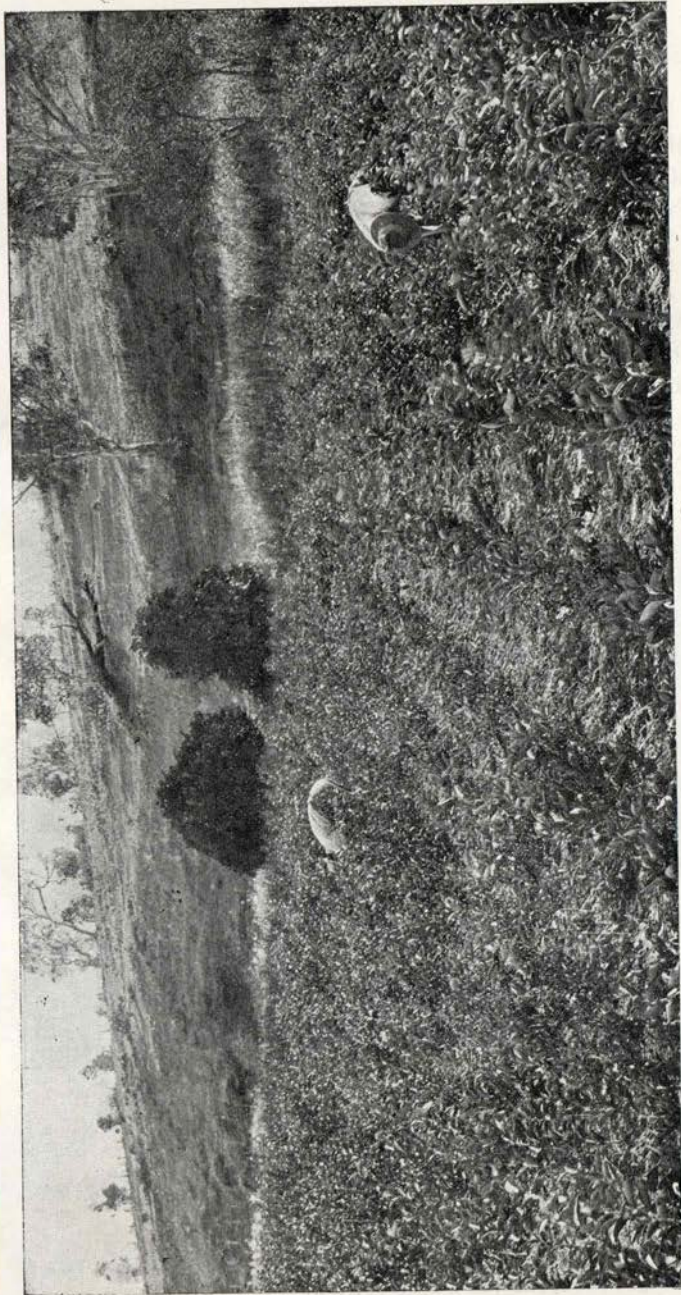


### PLANT PRUNES.

Prunes and Apricots do not depend on a fresh fruit market, and are one of the soundest investments you can make. Photo shows bed of 10,000 prunes as hardy and healthy as you could desire.

*Photo. April, 1923.*

L. J. WICKS, FRUIT TREE NURSERYMAN  
FRESHFORD NURSERIES, HIGHBURY, S.A.



Close view of bed of saleable orange trees perfectly free from scale or disease of any description, and propagated from selected bearing trees of the very finest type. Plant orange trees worked on the Sweet Orange or Seville stock and you will not be troubled with coarse or dry fruit. Photo. April, 1923.



## GRAPE VINES.

(Table Varieties). 9d. each, 7/6 per doz., 30/-  
per 100. Special quotations for 1,000 lots.

BELAS BLANC	MRS. PINCE'S BLACK
BLACK ALICANTE	MUSCAT
BLACK HAMBURG	MUSCAT OF ALEXANDRIA
BLACK PRINCE	MUSCAT GORDO BLANC
BLACK MAMMOTH	MUSCAT HAMBURG
BUCKLAND'S SWEETWATER	PEDRO XIMINES
CRYSTAL	RED MUSCAT
CORNELIAN (Quick's Early)	RED PRINCE
DAIRA (Ohanez)	ROYAL ASCOT
DORADILLA	ROYAL MUSCADINE
DUKE OF BUCCLEUGH	SANTA PAULA
GRAND TURK	SULTANA
GREEN'S EARLY	SWEETWATER
GROS COLMAN	WALTHAM CROSS
LADY'S FINGERS	WORTLEY HALL
MADRESFIELD COURT	WOOD'S RED MUSCAT
MALACA (Black)	WHITE FRONTIGNAC
MALACA (Red)	ZANTE CURRANT

## GRAFTED OLIVES.

3/- each, 30/- per dozen.

BLACK ITALIAN	GROS RENDENOW
BOUQUETTIER	HARDY'S MAMMOTH
CUCCO	LUCCA
EARLY BLANQUETTE	VERDALE
GRITA	

L. J. WICKS, FRUIT TREE NURSEYMAN  
FRESHFORD NURSERIES, Highbury, S.A.



## MISCELLANEOUS.

	EACH
BLACKBERRIES . . . .	9d.
CURRENTS (Black, Red, White) . . . .	9d.
CHESTNUTS (Spanish) 2/6 to 3/6	
FILBERTS . . . . .	2/-
GOOSEBERRIES (of sorts) . . . . .	9d.
GUAVAS (Purple) . .	1/9
	EACH
LOGANBERRY . . . . .	1/3
MEDLARS . . . . .	2/-
PASSION FRUIT . . . .	1/6
POMEGRANATES . . . .	2/-
WALNUTS . . . . .	2/6
	DOZ.
RASPBERRIES . . . .	7/6
	EACH
WALNUTS . . . . .	2/-

L. J. WICKS, FRUIT TREE NURSERYMAN  
FRESHFORD NURSERIES, HIGHBURY, S.A.





View of Main Slope with packing sheds in the background, showing bed of orange trees on high ground with general deciduous trees in distance.

